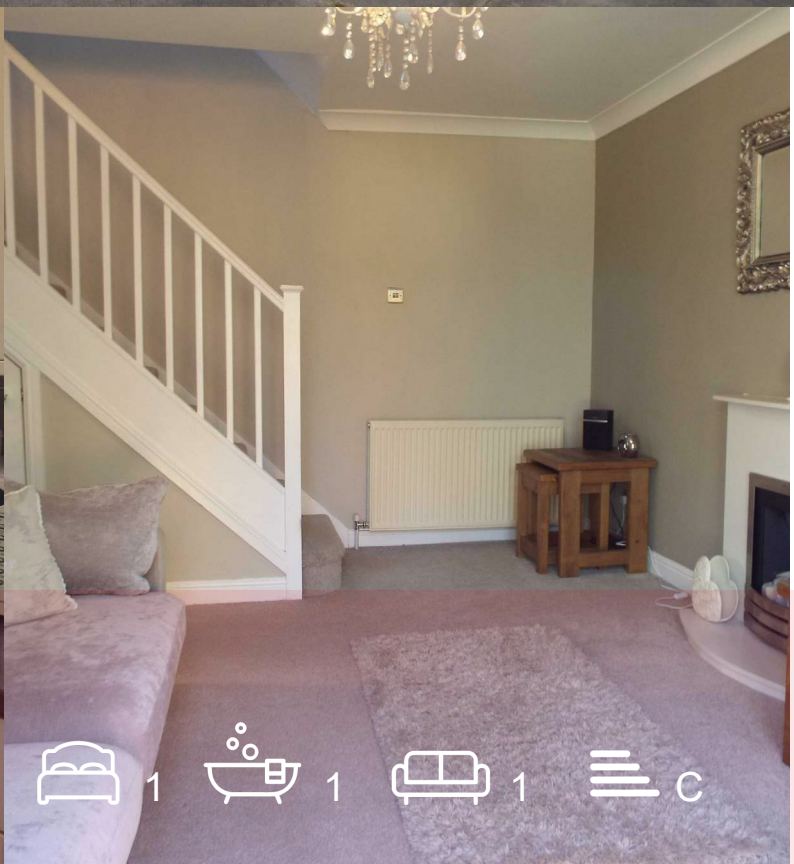




14 Plover Way
Morley, Leeds, LS27 8UR
£795 Per Calendar Month



 1
  1
  1
  C

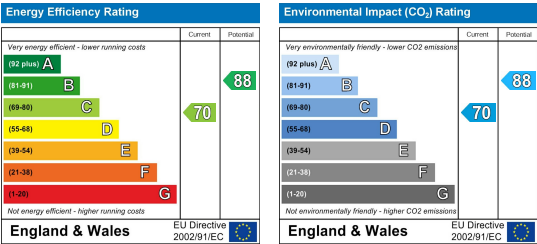
Floor Plan



Area Map



Energy Efficiency Graph



Viewing

Please contact our Farsley Office on 0113 204 0322 if you wish to arrange a viewing appointment for this property or require further information.

- One Bedroom House
- Enclosed Rear Garden
- Unfurnished
- Modern Decor
- Off Road Parking
- Ideal for over 50's or retired



Nestled in a tranquil cul de sac in the charming area of Morley, this delightful one-bedroom mid-terrace house offers a perfect retreat for those seeking peace and quiet. The property features a well-designed layout, comprising a welcoming reception room that flows seamlessly into a modern kitchen, creating an inviting space for both relaxation and entertaining.

The open staircase leads you to the comfortable bedroom, which is ideal for restful nights. The full house bathroom is conveniently located, ensuring all your needs are met. One of the standout features of this property is the enclosed private rear garden, providing a serene outdoor space to unwind or enjoy a morning coffee.

Additionally, the property includes parking for two vehicles, making it practical for those with a car. This home is particularly suitable for mature tenants who appreciate a quiet environment while still being close to local amenities. With its modern features and peaceful setting, this property is a wonderful opportunity for anyone looking to settle in Morley.
Ideal property for over 50's
No pets No Smokers
Working professional or retired persons only



These particulars, whilst believed to be accurate are set out as a general outline only for guidance and do not constitute any part of an offer or contract. Intending purchasers should not rely on them as statements of representation of fact, but must satisfy themselves by inspection or otherwise as to their accuracy. No person in this firm's employment has the authority to make or give any representation or warranty in respect of the property.